

DX100 - 100mm Extract Fan

Other options available in the Simply Silent range includes pullcord, timer, humidistat & PIR versions.

Key Features

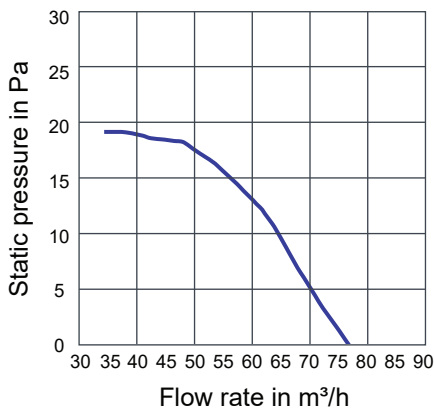
XPELAIR DX100

Type: Axial extract fan.
Application: Domestic bathrooms, shower rooms & toilets.
Hole diameter: 115mm (wall)
 125mm (window)

Stylish, compact and easy to install single speed fan, suitable for a wide range of domestic applications including bathrooms, shower rooms and toilets. The DX100 has a softly curved flowline grille design which will blend into wall or ceiling decor, whilst the shallow depth of the outlet spigot ensures compact window installation.



Performance



The fan is supplied complete with a universal mounting kit (wall tube, gasket x 2, outer grille) and includes an air operated backdraught shutter suitable for wall, ceiling and window mounting (in single glazing up to 6mm) applications.

The DX100 is IP55 rated and suitable for 220V-240V 50Hz mains operation. Class B insulation for operation in ambient temperatures up to 40°C and are fitted with a thermal cut out.

Specifications

	DX100
UK reference number:	90839AW
Remote switch:	X
Integral pullcord:	-
Integral timer (adjustable from 2-20 mins):	-
Humidity sensor (50-90% RH):	-
Passive infrared sensor:	-
Max. airflow (m³/h):	76
Max. airflow (l/s):	21
Sound pressure level (dB (A)@3m):	35
Electrical power rating (W):	12
IP rating:	IPX5
Universal mounting kit:	X
Weight (kg):	1.2

DX100 - 100mm Extract Fan

Model

DX100 Ref. 90839AW

- Single speed axial unit.
- Operated by a remote switch.
- Includes universal mounting kit.
- Colour: white.

Controllers

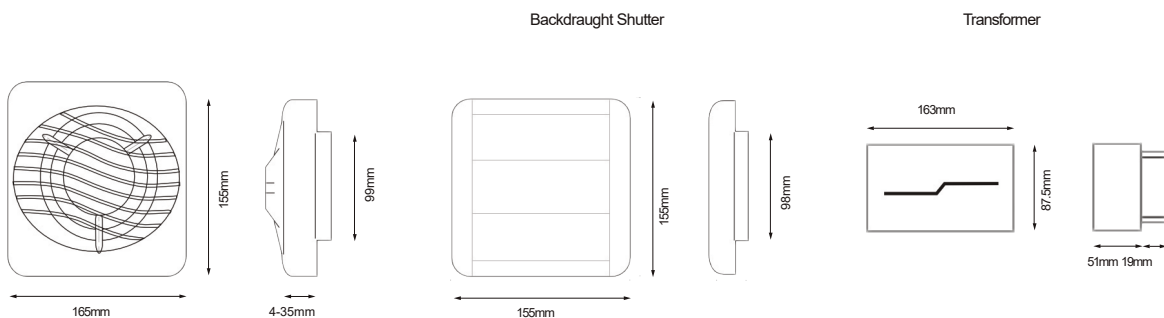
Remote Humidistat XRH Ref. 21856AW

- Stand alone humidistat switches fan On/Off when RH reaches preset levels. Complete with pull cord override switch.

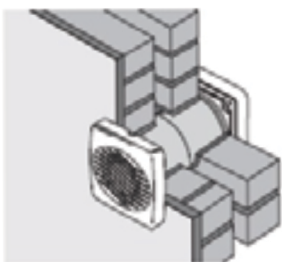
Time Delay Unit DT20 Ref. 21850AW

- User adjustable run-on timer. (2-20 mins)
- Passive Infrared Sensor XPIRA Ref. 21871AA.
- Activates fan via body movement, ideal for infrequently used public spaces. Built-in timer to prevent nuisance tripping.

Dimensions (mm)

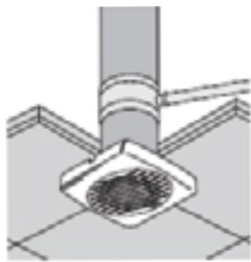


Installation and Accessories



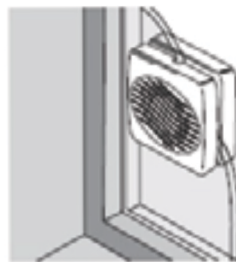
Wall mounting

Hole diameter: 115mm
Ducting size: 100mm



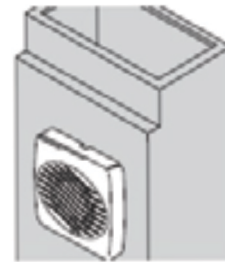
Ceiling mounting

Hole diameter: 115mm
Ducting size: 100mm



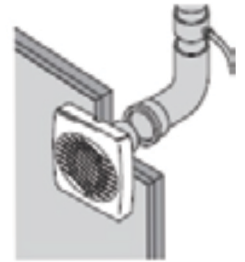
Window mounting

Hole diameter: 125mm



Ventilation shaft mounting

Hole diameter: 110mm



Ducting application

Hole diameter: 110mm
Ducting size: 100mm